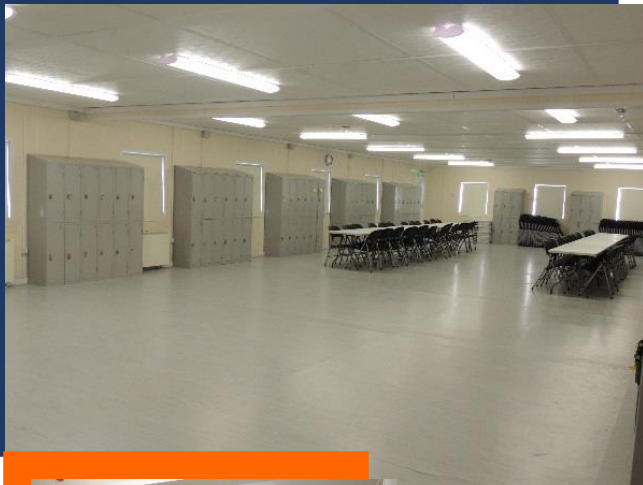


De Lacy College

De Lacy College, Ashbourne,
Co. Meath

What We Did

Instaspace was successful in winning the tender to manufacture and install a fully functional 1,108m² modular, prefabricated secondary school building.



We carried out all necessary works from site preparation to external finish, in full compliance with current building regulations.

Instaspace secured and prepared the site and ensured the provision of adequate drainage. The prefabricated units were manufactured off-site, then transported and craned into position on-site.



Once installed, the bespoke fit-out was completed to include all mechanical and electrical installations, interior finishes and flooring.

Key Points

- Building was completed within a busy, active secondary school environment, with minimal disruption to college activities.
- The finished project included all external works and installations.
- Instaspace provided general classrooms, ASD room, woodwork room, art room, home economics room, staff room, offices, toilets, corridors and circulation area.
- The total turn-key project was delivered in two phases, within a time-frame of 10.5 weeks.



- Instaspace commissioned, tested and certified the fully functioning pre-fab, modular building.

To speak to one of our team, contact us Tel: 041 988 2656